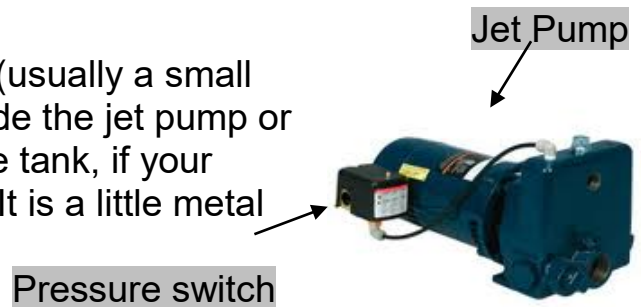


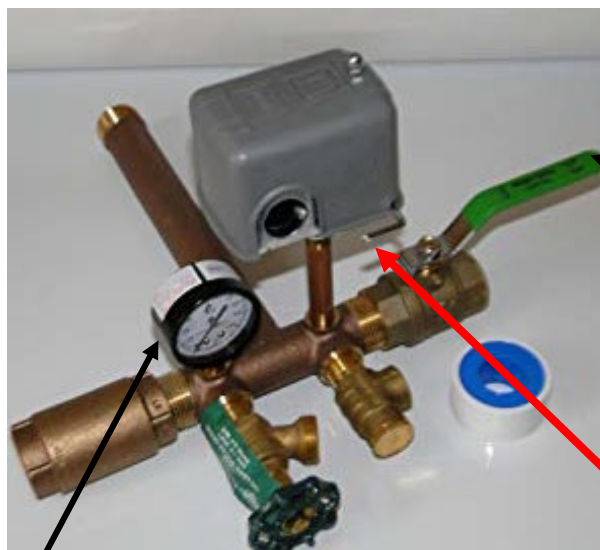
No Water in Home? Do you have a Low Water Pressure Switch?

How to Re-set a Low Water Pressure Switch

- The Low Cut Off pressure switch, (usually a small grey or black box), should be beside the jet pump or beside the bottom of your pressure tank, if your pump is in the well (submersible). It is a little metal box with a lever on it.

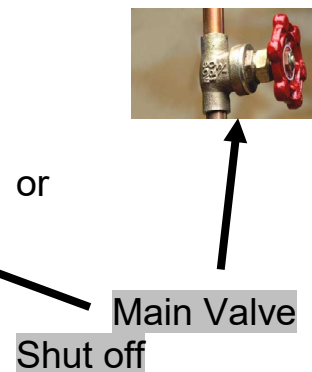


Turn off any water taps.
Make sure main valve is on.

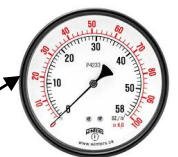
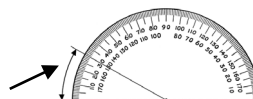


Pressure gauge

Low water lever



Slowly pull the lever up on box 30 degrees until pump pressure reading on gauge increases to at least 30-40 psi. The lever may appear stiff or have some resistance.



Continue to hold until pressure on the gauge increases to this range and slowly let the lever go. The pump should take over and increase pressure on the gauge slowly. If it does not reset, let the lever go and wait an hour and try again.

If the pump fails to engage, your jet pump may have lost prime or it may indicate further issues with the submersible pump or in the well lines. If the gauge does not increase in pressure, there may be several reasons for this including a gauge failure.

Contact your Ministry of Environment licensed well technician or pump installer. (SWS)